

Gibraltar (lots 14 & 17)

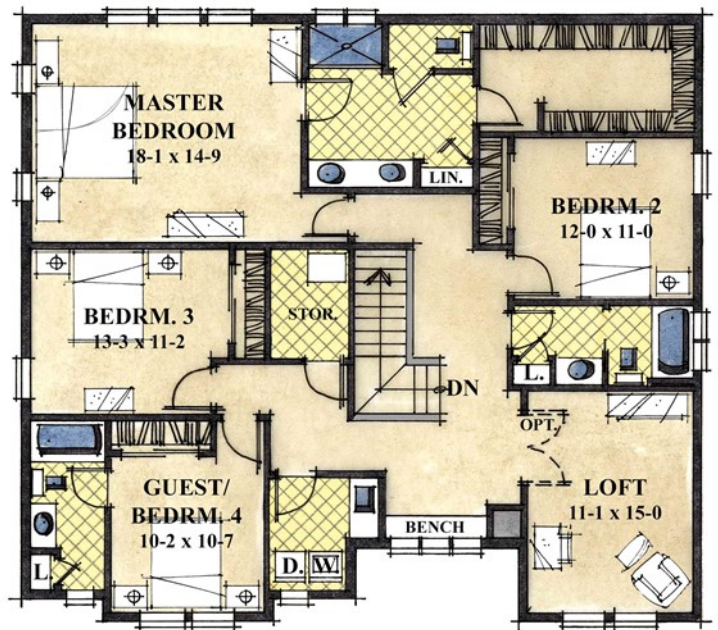
3,036 sqft • 4 beds, 4 baths • 2 - 3 car garage • den • family room



Modern Country 1



Main Level



Upper Level

Floor plan, elevation & specifications shown are for illustration purposes only. Colors and sizes are approximate. Builder reserves the right to revise floor plans and specifications as necessary.

Building Homes & Communities Since 1979 • LandedGentry.com • (877) 769-8070