

Juniper Loft

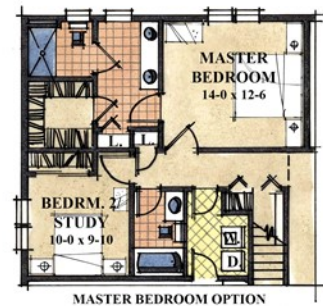
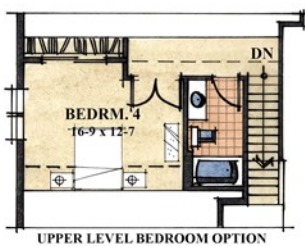
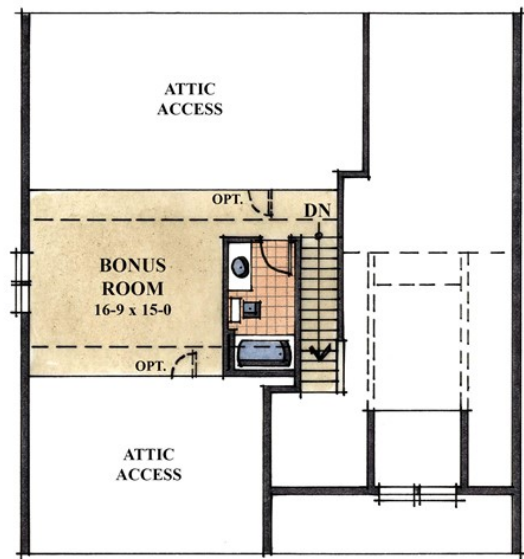
1,647 sqft • 3 beds, 3 baths • 2-car garage • 3 and 4 bedroom option



Craftsman 1 (included)



Craftsman 2 (optional)



Floor plan, elevation & specifications shown are for illustration purposes only. Colors and sizes are approximate. Builder reserves the right to revise floor plans and specifications as necessary.

Building Homes & Communities Since 1979 • LandedGentry.com • (877) 769-8070