

Padilla

2,469 sqft • 4 beds, 2.5 baths • 2 or 3 car garage • study + family room



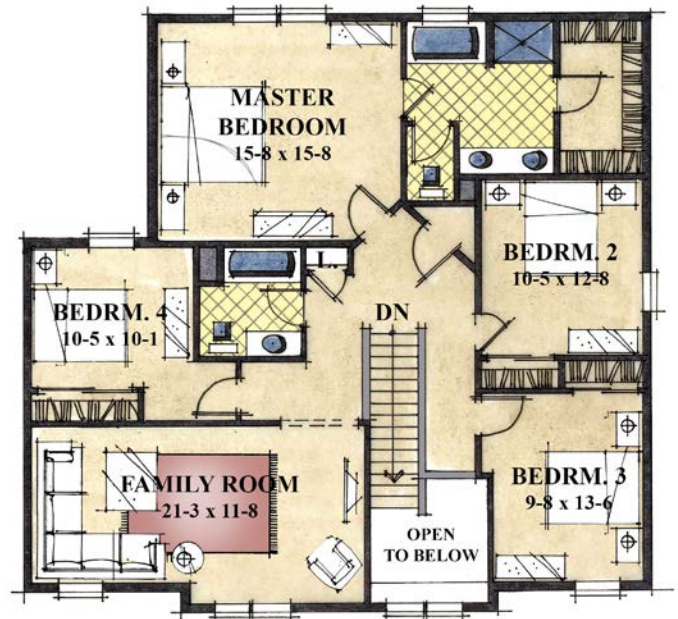
Modern Country 1 (included)



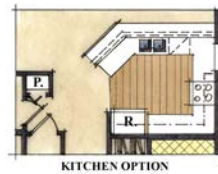
Modern Country 2 (optional)



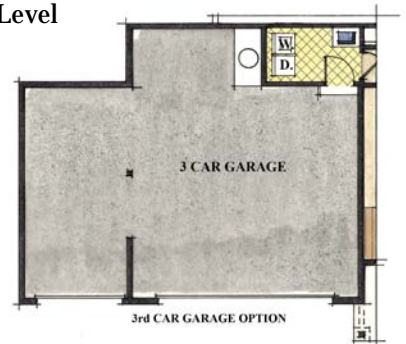
Main Level



Upper Level



KITCHEN OPTION



3rd CAR GARAGE OPTION

Floor plan, elevation & specifications shown are for illustration purposes only. Colors and sizes are approximate. Builder reserves the right to revise floor plans and specifications as necessary.

Building Homes & Communities Since 1979 • www.LandedGentry.com • Toll Free (877) 769-8070