

Garden (lots 3 & 6)

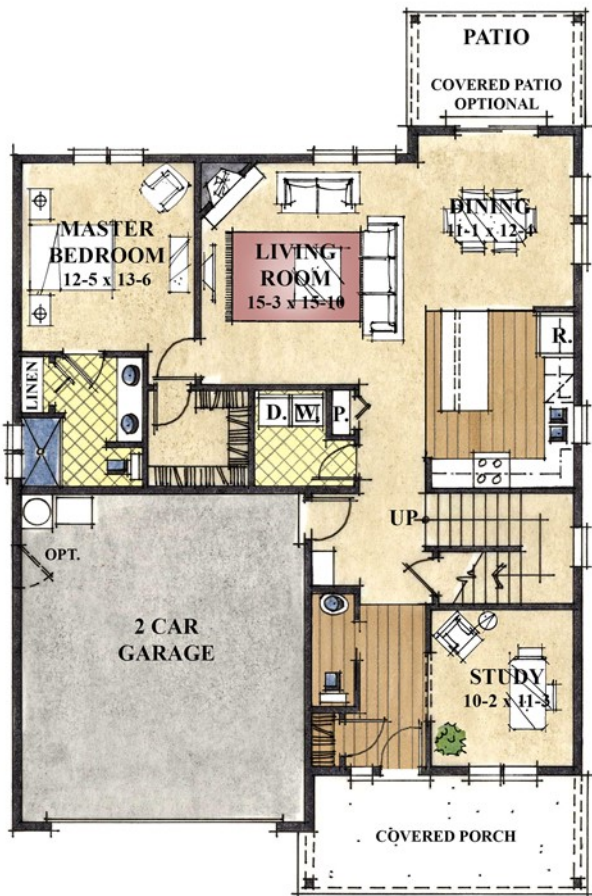
2,284 sqft • 3 or 4 beds, 2.5 baths • 2 or 3 car garage • family room



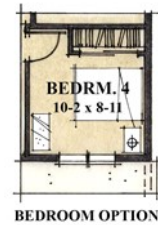
Modern Country 1



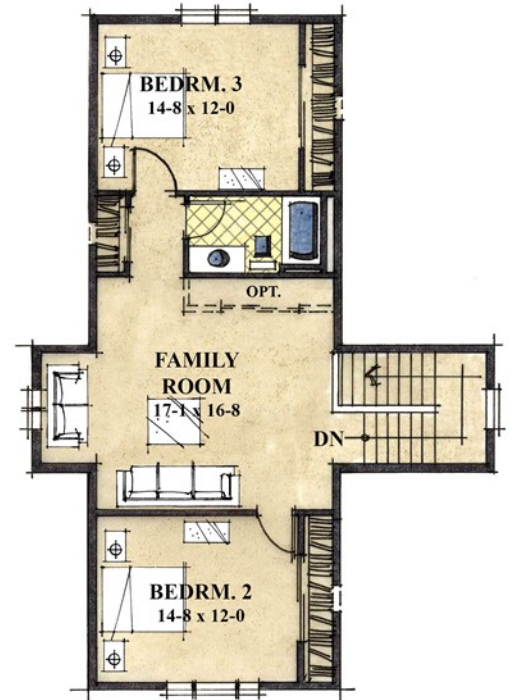
Modern Country 2 (optional upgrade)



Main Level



3rd Car Garage Option - Lot 3



Upper Level

Floor plan, elevation & specifications shown are for illustration purposes only. Colors and sizes are approximate. Builder reserves the right to revise floor plans and specifications as necessary.

Building Homes & Communities Since 1979 • LandedGentry.com • (877) 769-8070

All square footage & dimensions are approximate