

# Lowman

# 48°NORTH

2,936 sqft • 4 beds, 3 baths • 4 car garage • media room • walk-in closet • covered deck

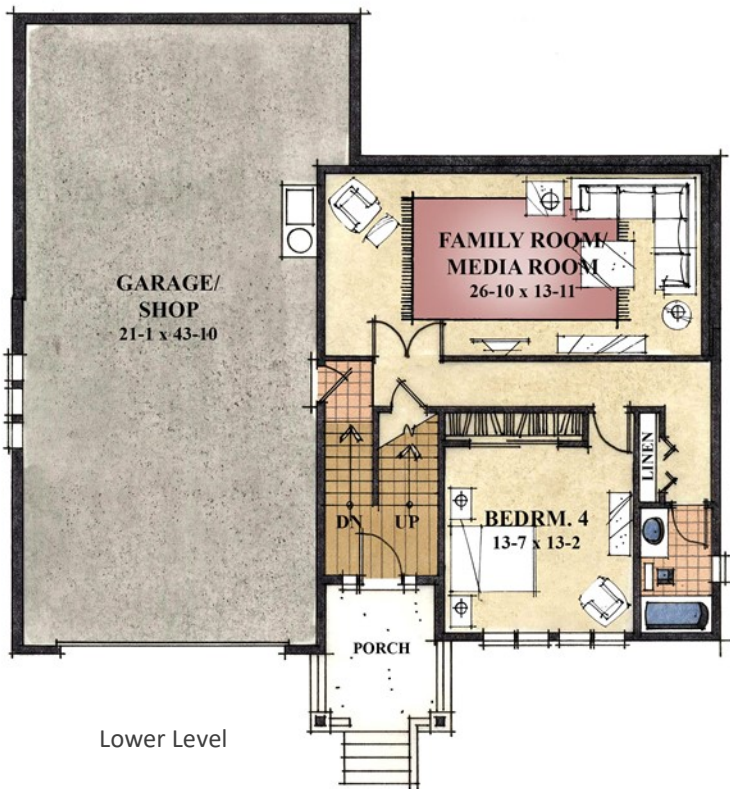
**Move In Ready!**



Coastal 1 - Lot 25



Coastal 2 - Lot 11



Floor plan and elevation shown are for illustration purposes only. Colors and sizes are approximate. Builder reserves the right to revise floor plans and elevations as necessary.

Building Homes & Communities Since 1979 • [LandedGentry.com](http://LandedGentry.com) • (877) 769-8070